

Windows Headset Drivers Installation Instructions

Your PerSono headset is fully compatible with

- Windows 98SE (second edition)*,
- Windows ME, and
- Windows 2000.

* Early versions of Windows98, prior to the second edition, may reduce the functionality of your Plantronics software and headset. It is recommended that you upgrade to one of the windows versions listed above for the best performance of your headset.

Plantronics, Inc.
345 Encinal Street
Santa Cruz, CA 95060
www.Plantronics.com/digital



To Start Installing

Before beginning the installation of your headset hardware it is strongly recommended that you have already successfully installed the Plantronics PerSono™ Software from the PerSono™ CD, as detailed in the PerSono™ Quickstart guide. Brief instructions of this install process are included here.

Insert the Plantronics PerSono CD into your computer. If the introduction program does not start automatically soon after you insert the CD in your computer, do the following:

1. Click the Windows Start menu.
2. Click Run.
3. In the Run dialog, click *Browse*.
4. In the Browse dialog Look in: list, double-click *My Computer*.
5. Under My Computer, double-click the Plantronics PerSono CD.
6. Double-click the *setup.exe* file.

The installation program will run a setup wizard and you will be prompted to insert the headset connector into a USB port on your computer. You will then be prompted by the Add New Hardware wizard to find drivers for your headset.

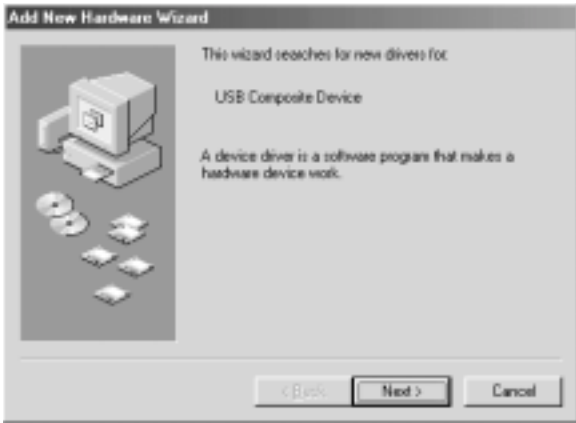
To Install Windows 98 and 98SE Headset Drivers

Have your Windows 98 or 98SE installation CD ready. You will need it to install drivers for your PerSono headset. Some computer manufacturers copy the Windows CD onto the computer hard drive. You may use these files instead of those on the CD.

Plantronics supplies two of the drivers needed to complete the headset install. These drivers are located in the install directory for PerSono that was selected during the Plantronics software install. If the Plantronics software has not been installed prior to this hardware installation process the two driver files are also available on the Plantronics CD. All other driver files are the property of Microsoft and will need to be obtained from your Windows Installation CD or data files if not already available on your system.

The Add New Hardware wizard will install up to five drivers for your headset — This may take a few minutes.

A dialog similar to the following will appear after you insert the PerSono headset connector into the USB port:

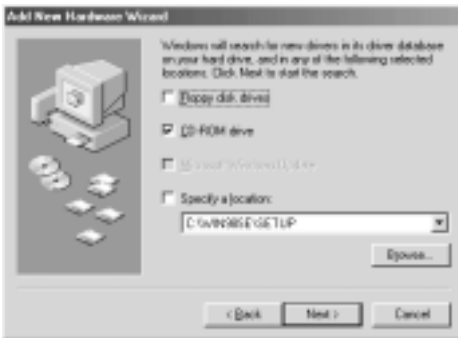


1. Insert your Windows installation CD into your CD ROM drive and click Next. (If inserting your Windows installation CD automatically launches a Windows install or upgrade routine you should exit that routine before proceeding with the headset install)

The following dialog will appear:



2. Select *Search for the best driver for your device* and click Next. The following dialog will appear:



3. Select the *CD-ROM drive* checkbox.

4. If your Windows installation files are located on your hard disk, also select the *Specify a location:* checkbox and click *Browse* to select the folder where the files are located.

5. Click *Next*.

A dialog similar to the following will appear:



The wizard will prompt you for several other drivers. Keep clicking *Next* until the program has finished.

Note: If the program cannot find a driver, it will prompt you to select the folder where the drivers are located. Be sure you have the Windows installation CD in your CD-ROM drive. If the installation files have been copied to your hard disk, be sure the path to these files is correctly entered in any search dialogs.

To Install Windows ME and 2000 Headset Drivers

A dialog similar to the following will appear after you insert the PerSono headset cord into the USB port:



The New Hardware wizard will install up to five drivers for your headset — this may take a few minutes.

1. Click *Next*.

The following dialog will appear:



2. Select *Search for a suitable driver for my device* and click *Next*.

In the dialogs that follow, click *Next* and the wizard will install all the necessary drivers. Continue to click *Next* until the program is finished.

PN 48791-01

© 2000 Plantronics, Inc. All rights reserved.

Plantronics, the Plantronics logo and PerSono are registered trademarks of Plantronics, Inc. Windows is a registered trademark of Microsoft Corporation in the United States and/or other countries.

All other trademarks are the property of their respective owners.