



# Plantronics

## Blackwire™ C610

## Blackwire C620

USER GUIDE

## WELCOME

Welcome to the Plantronics family of headset products. Plantronics provides a wide range of products from mission-critical and business-critical applications to personal communications and entertainment. For additional information visit our web site at [www.plantronics.com](http://www.plantronics.com) where you can visit our 24/7 support, browse through our knowledge base, chat live or ask a question. We also feature a variety of installation tutorials to make set up quick and easy. Please refer to the safety instructions for important product safety information prior to installation or use of the product.

## TABLE OF CONTENTS

Register your Product Online	2
Technical Assistance	2
Package Contents	3
Features	3
Powering the C610 & C620	4
Installing PerSono Suite Software	4
Wearing the Headset	5
Using the Headset	6
Media Manager	7
Troubleshooting	8

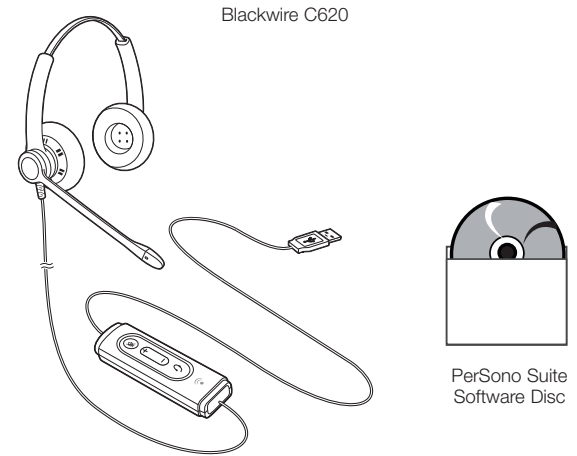
## REGISTER YOUR PRODUCT ONLINE

Visit [www.plantronics.com/productregistration](http://www.plantronics.com/productregistration) to register your product online so we can provide you with the best possible service and technical support.

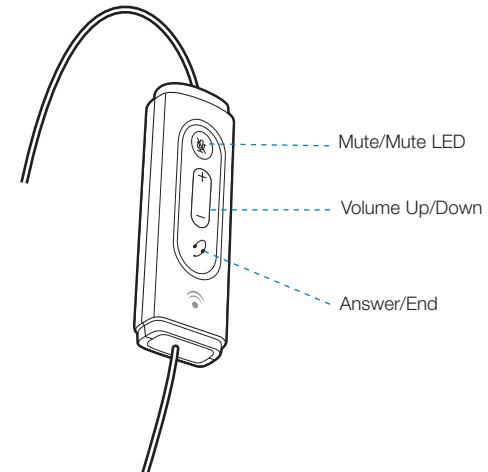
## TECHNICAL ASSISTANCE

Visit our Web site at [www.plantronics.com/support](http://www.plantronics.com/support) for technical support including frequently asked questions, compatibility and accessibility information. The Plantronics Technical Assistance Center (TAC) is also ready to assist you. Dial (800) 789-4971.

## PACKAGE CONTENTS



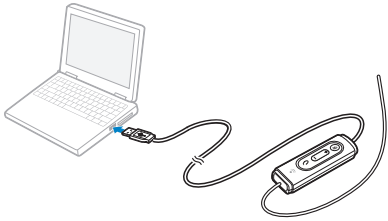
## FEATURES



**WARNING** Do not use headphones/headsets at high volumes for an extended period of time. Doing so can cause hearing loss. Always listen at moderate levels. See [www.plantronics.com/healthandsafety](http://www.plantronics.com/healthandsafety) for more information on headsets and hearing.

## POWERING

### Powering the C610 & C620



The USB adapter is automatically powered on upon inserting into the USB port of the computer.

No additional software or drivers are required to use this headset with Microsoft Office Communicator.

## INSTALLING PERSONO® SUITE SOFTWARE

Plantronics PerSono Suite software provides the link between your headset and the softphone application on your computer. PerSono Suite software provides the ability to remotely detect and answer/end a call from your softphone application via the headset call control button.

- 1 With the CD inserted, go to the PerSono Suite main screen and click on "Install the PerSono Suite Software."
- 2 Your softphone may require you to choose which audio device you wish to use. Please refer to softphone documentation for details.

**NOTE** When the USB adapter is installed, it becomes the default audio device in your computer. You can set preferences manually in the Windows® operating system through the Sounds and Audio Devices option in the Control Panel.

**NOTE** Once installed we recommend that you set PerSono Suite to launch whenever the Windows operating system starts.

## Configuration and Status



: Right click on the headset system tray icon and choose "Open". This will bring up the PerSono Suite Basic Options and Current Status Screens.

Refer to online application help for explanation details on the PerSono Suite software.

## WEARING THE HEADSET

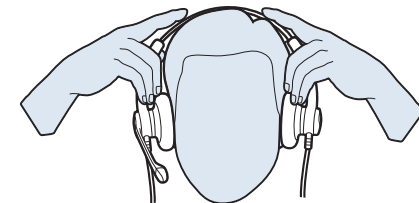
1



### 1. Identify the Components

- 1 Adjustable Headband
- 2 Receiver
- 3 Click Stop Turret
- 4 Clothing Clip
- 5 Headset Cord
- 6 Ear Cushion
- 7 Boom
- 8 Noise-Canceling Microphone

2



2.1

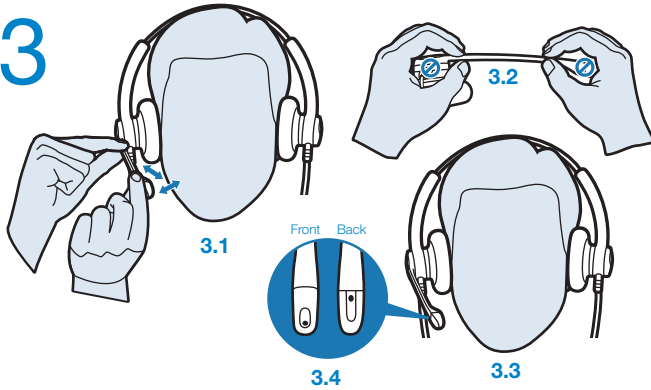
### 2. Adjust the Headband

To adjust the headband, lengthen or shorten the band until it fits comfortably. The clickstop feature keeps the headband securely adjusted.

Position the headset receiver so that the foam cushions sit comfortably over the center of your ears.

2.1 Adjust to fit.

# 3



## 3. Adjust the Mouthpiece

**3.1** Hold the receiver securely against your ear with one hand.

With your other hand, adjust the clickstop turret and the microphone so that the tip sits two finger-widths from the corner of your mouth. (To prevent breath noise, avoid putting the microphone in front of your mouth.)

**3.2** Carefully bend and shape the boom with both hands as shown. Avoid bending or twisting the boom near the microphone or earpiece.

## USING YOUR HEADSET

### Answering/Ending/Making Calls with PerSono Suite on Softphone

**To make a call**, simply dial the number via your softphone application.

**To answer or end a call**, press the answer/end button.

#### For Softphones Not Compatible with PerSono Suite

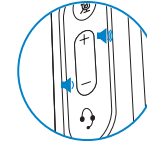
Check the PerSono Suite compatibility list at [www.plantronics.com/PerSono Suite](http://www.plantronics.com/PerSono Suite) for the most current information on softphone compatibility.

If your softphone is not currently supported by PerSono Suite, remote detection and answer/end via the headset does not function. Pressing the call control button on the headset will not function; you must answer the call from the softphone.

### Putting a call on hold

If your softphone supports this feature, holding down the answer/end button for 2 seconds will place the call on hold. Refer to your phone's user guide for additional features available while on hold. Pressing the answer/end button again will take the call off hold.

## Adjusting Volume

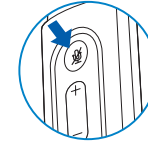


To increase listening volume, press the upper end (+) of the volume button. To decrease listening volume, press the lower end (-).

To adjust the listen or speak volume of the softphone, please refer to the softphone user documentation.

To adjust the listen or speak volume of the audio device on the computer, use the Sound and Audio Device section on the control panel.

## Muting a Call



During a call, briefly press the mute button to mute the microphone. When muted, the Mute LED will be lit.

To unmute press the button again.

## MEDIA MANAGER

PerSono Suite provides user selectable options to manage the output to your headset from supported media players when a call comes in and when it ends. This feature is under Media Players in the PC Panel section of Persono Suite.

## TROUBLESHOOTING



Problem	Solution
<b>I cannot hear caller.</b>	<ul style="list-style-type: none"><li>• The USB adapter is not set as the default audio device. Use the Audio settings in Windows under Sounds and Audio Devices to select "Plantronics C610/C620" as the audio device.</li><li>• Listening volume is too low. Press the volume up button on the headset.</li></ul>
<b>Callers cannot hear me.</b>	<ul style="list-style-type: none"><li>• Headset is muted. Press the mute button on headset to unmute the microphone.</li><li>• Headset microphone boom aligned incorrectly. Align the headset boom with your mouth.</li><li>• The USB adapter is not set as the default Voice device. Use the Voice settings in Windows under Sounds and Voice Devices to select "Plantronics C610/C620" as the voice device.</li></ul>
<b>Sound in headset is distorted. I can hear echo in headset.</b>	<ul style="list-style-type: none"><li>• Lower the listen volume on your softphone until the distortion disappears.</li><li>• Adjust volume on headset.</li></ul>
<b>The other headset I was using to listen to music does not work any more.</b>	<ul style="list-style-type: none"><li>• The USB adapter will set itself as the default audio device in Windows. Use the Audio settings in Windows under Sounds and Audio Devices to change the device used for audio.</li></ul>
<b>My headset stops responding to button presses.</b>	<ul style="list-style-type: none"><li>• When a PC goes into standby or hibernation, the USB adapter no longer is powered on. Be sure your PC is in an active state.</li></ul>
<b>My headset does not work with the headset I am using on my PC. (I cannot answer or disconnect from the headset call button).</b>	<ul style="list-style-type: none"><li>• Check compatibility list on <a href="http://www.plantronics.com/personocall">www.plantronics.com/personocall</a> to ensure your softphone is compatible for remote answer and disconnect.</li><li>• When a PC goes into standby or hibernation, the USB adapter is no longer powered on. Be sure your PC is in an active state.</li><li>• Be sure PerSono Suite software is installed and running.</li></ul>

Plantronics, Inc.  
345 Encinal Street  
Santa Cruz, CA 95060  
United States  
Tel: 800-789-4971  
[www.plantronics.com](http://www.plantronics.com)

For product support contact us at [www.plantronics.com/support](http://www.plantronics.com/support).

©2009 Plantronics, Inc. All rights reserved. Plantronics, the logo design, Blackwire, PerSono Suite, and Sound Innovation are trademarks or registered trademarks of Plantronics, Inc. All other trademarks are the property of their respective owners.

Patents EM 001024681-0001; 001024681-0002; Patents Pending  
83001-22 (11.09)