



Plantronics Explorer® 240 & 395

User Guide

Welcome

Thank you for purchasing the Plantronics Explorer 240 or 395 headset. This guide contains instructions for setting up and using your new headset.

△ Before using this product, please refer to the For Your Safety booklet for important safety, charging, battery and regulatory information.

Getting Assistance

The Plantronics Technical Assistance Center is ready to assist you. You can find answers to frequently asked questions, ask a question using e-mail, receive service over the Internet, or speak directly with a representative. Visit www.plantronics.com/support or call your country support line mentioned at the back of this user guide.

NOTE If you are considering returning this headset, please contact the Technical Assistance Center first.

Registering Your Product

Visit www.plantronics.com/productregistration to register your product online so we can provide you with the best service and technical support.

NOTE For pairing your headset, your PIN code/Passkey is 0000.

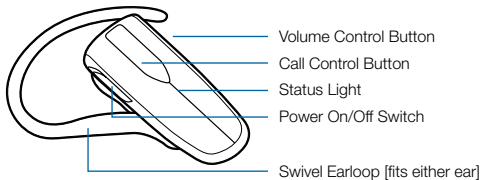
Contents

Package Contents and Features.....	iv
Charging Your Headset.....	1
Using the AC charger	1
What is Bluetooth®?	2
Plantronics QuickPair® Technology	2
Range (the distance between headset and phone)	2
Pairing Your Headset	3
Adjusting the Fit.....	4
Headset Controls and Indicators.....	6
Troubleshooting	9
Product Specifications.....	10

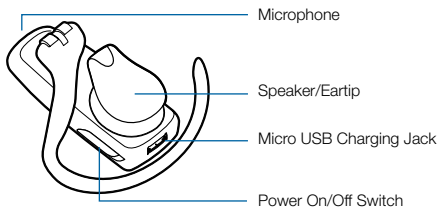
Package Contents and Features

NOTE Your headset may look different than the illustration, but will still work as described.

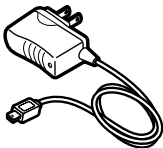
Headset Front*



Headset Back



AC Charger 100–240V



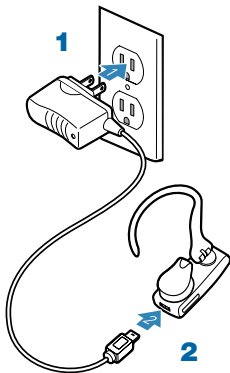
* For illustration purposes only; designs will vary by model number.

Charging Your Headset

Your new headset performs best when it is fully charged. While your headset is charging, the indicator light glows red. When your headset is fully charged, the indicator light turns blue. Do not use your headset while it is connected to the charger.

How to Charge Your Headset Using the AC Charger

- 1 Plug the charger into a power outlet.**
- 2 Connect the charger cable to the headset.**



CHARGING TIME

2 hours	Full charge
1 hour	Minimum charge before first use

NOTE Never charge the battery where the temperature may fall below 0°C (32°F) or rise above 40°C (104°F) – for example, in an unattended motor vehicle. Do not charge the battery while it is unattended.

What Is Bluetooth?

Bluetooth wireless technology provides a way for devices, like headsets and phones, to communicate with each other without wires. Pairing is the set-up process of introducing your headset to your phone.

Before using your headset for the first time, you must pair it with your Bluetooth-enabled phone.

Plantronics QuickPair™ Technology

To simplify the Bluetooth setup process, your new headset uses Plantronics QuickPair technology. This process is shown on the next page.

- **The first time** you turn your headset on, your headset automatically enters pairing mode for 10 minutes (the indicator light flashes red and blue).
- **Until you successfully pair** your headset with a Bluetooth-enabled phone, every time you turn it on it will enter pairing mode.
- **To later pair to a new phone**, turn on the headset, then press and hold the Call Control button until red then blue flashing appears, which indicates pairing mode status.

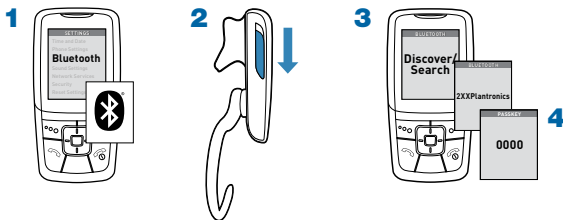
Range (the distance between headset and phone)

- To maintain the connection, keep your headset within 10 meters (33 feet) of your phone.
- For the least amount of interference place the headset and phone on the same side of your body.

If you move too far from your phone and lose the Bluetooth connection:

- the headset may reconnect automatically within 60 seconds when you move closer to your phone (you will hear a low tone), OR
- you may have to tap the Call Control button to reconnect (you will hear a low tone), OR
- if neither of the above options work, you may have to reconnect to your headset using your phone's Bluetooth menu.

Pairing Your Headset



How to Pair Your Phone With Your Headset for the First Time

1 Turn on the Bluetooth feature on your phone.

For most phones, select Settings/Tools > Connections > Bluetooth > On. See your phone's user guide for more information.

2 Turn the headset on.

Turn on your headset by sliding the Power On/Off Switch toward the microphone. Wait until the indicator light flashes red then blue.

If you don't see the red then blue flashes, turn the headset off, then turn it on again. Press and hold the Call Control button until you see the red then blue flashes that indicate pairing mode status.

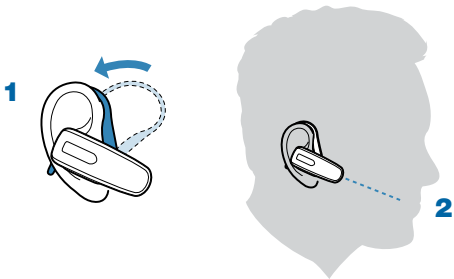
3 Set your Bluetooth phone to 'discover' to locate the headset.

This usually involves going to 'setup', 'connect' or 'Bluetooth' menu on your phone and selecting the option to 'discover' or 'add a device'.

4 Once available headsets are listed, select your headset (for example 2XXPlantronics or 3XXPlantronics). If prompted for a passkey, enter 0000.

When pairing is successful, the indicator on your headset flashes blue. Your phone will also confirm when pairing is complete.

Adjusting the Fit



The headset comes out of the box with the earloop in place to wear on your right ear.

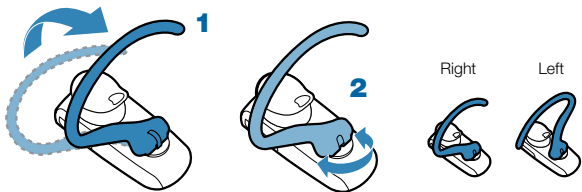
1 Place the earloop behind your ear.

Rotate the headset so that the speaker rests comfortably in your ear.

2 Align the microphone with the corner of your mouth.

Callers can hear you best when you point the microphone towards the corner of your mouth.

Adjusting the Fit



It's easy to move the earloop to fit on your left ear.

1 Lift the earloop.

2 Swivel the earloop to the right and push it back down.

Headset Controls and Indicators

Action	Indicator Light	Tone
Turn the headset on or off	<p>On: Short blue flash</p> <p>Off: Long red flash, then turns off</p>	<p>On: Four rising tones</p> <p>Off: Four descending tones</p>
Answer/end a call	None	Brief low tone at the beginning or end of the call.
Reject an incoming call	None	Low tone
Missed call indicator	Two simultaneous red/blue flashes, a pause, then two more red/blue flashes (repeating for 5 minutes or until cancelled).	None

Headset Controls and Indicators

Action	Indicator Light	Tone
Make a call	Blue flash every 2 seconds until the call is ended.	Ringing
Battery level	Red flashes 1 More than 2/3 full 2 1/3 - 2/3 full 3 Less than 1/3 full	None when checking level. Low battery tone indication: 3 tones when under 5 minutes talk time is remaining.
Adjust the volume (during call)	Tap the Volume button to increase through 4 levels; tap at top level to return to lowest volume setting.	Low tone at every volume level change. (Two tones at maximum volume level.)

⚠ WARNING Do not use headphones/headsets at high volumes for an extended period of time. Doing so can cause hearing loss. Always listen at moderate levels. See www.plantronics.com/healthandsafety for more information on headsets and hearing.

Headset Controls and Indicators

	Action	Indicator Light	Tone
Voice Dial	Press and hold the Call Control button until you hear a tone.	None	Single low tone; phone may prompt with "Name please" or tones.
Redial last number	Tap the Call Control button twice.	None	Two brief low tones
Transfer a call from headset to phone, or from phone to headset	While the call is in progress, press and hold the Call Control button until you hear a tone.	None	Long low tone when moving to phone; short low tone when moving to headset.

Troubleshooting

My headset does not work with my phone

Your headset may not have been in pairing mode when your phone was searching for it. Repeat the pairing process on [page 3](#).

You may have made incorrect menu selections on your phone while pairing. Repeat the pairing process on [page 3](#).

Callers cannot hear me, or I cannot hear callers/dialing tone

Make sure the headset Power Switch is in the ON position.

Your headset may be out of Bluetooth range or experiencing interference. Move the headset closer to your phone, and make sure your headset and phone are on the same side of your body. See Range on [page 2](#).

Your headset battery is drained. Recharge the battery using the supplied AC power adapter.

The listening volume is too low. Tap the Volume button to increase the headset volume.

My headset is flashing red then blue

Your headset is in Pairing mode. If you are not trying to pair the headset, reset it by simply turning headset off then on again. Otherwise, see Pairing on [page 3](#).

Product Specifications

Talk Time*	Up to 5 hours
Standby Time*	Up to 7 days
Charge Time	2 hours
Range	Up to 10 meters (33 feet)
Power Requirements	5V DC – 180 mA
Battery Type	Rechargeable, non-replaceable, lithium ion polymer
Storage/Usage/ Charging Temperature	0° C - 40° C (32° F - 104° F)
Bluetooth version	2.1 + EDR (Enhanced Data Rate) Supports your phone's Bluetooth Hands-free (HFP), Headset (HSP) and Secure Simple Pairing (SSP) profiles.

* Battery enabled. Performance may vary by device.

For safety information, see the separate "For Your Safety" booklet.

For warranty information, see the separate "2 Year Warranty" leaflet or visit www.plantronics.com

en

Plantronics Ltd
Wootton Bassett, UK
Tel: 0800 410014

ar

منطقة الشرق الأوسط
لمزيد من المعلومات:
www.plantronics.com

cs

Czech Republic
www.plantronics.com

da

Danmark
Tel: 80 88 46 10

de

Plantronics GmbH
Hürth, Deutschland

Kundenservice:
Deutschland 0800 9323 400
Österreich 0800 242 500
Schweiz 0800 932 340

el

www.plantronics.com
Για περισσότερες
πληροφορίες:

es

Plantronics Iberia, S.L.
Madrid, España
Tel: 902 41 51 91

fi

Finland
Tel: 0800 117095

fr

Plantronics Sarl
Noisy-le-Grand
France

► N° Indigo 0 825 0 825 99

0,150 € TTC / MN

ga

Plantronics BV
Regus House
Harcourt Centre
Harcourt Road
Dublin 2
Ireland
Service ROI: 1800 551 896

he

למידע נוסף, בקר באתר:
www.plantronics.com

hu

További információk:
www.plantronics.com

it

Plantronics Acoustics
Italia Srl
Milano, Italia
Numero Verde: 800 950934

nl

Plantronics B.V.
Hoofddorp, Nederland
Tel: (0)8000 Plantronics
0800 7526876 (NL)
00800 75268766 (BE/LUX)

no

Norge
Tel: 80011336

pl

Aby uzyskać więcej
informacji:
www.plantronics.com

pt

Portugal
Tel: 0800 84 45 17

ro

Pentru informații
www.plantronics.com

ru

Дополнительная
информация:
www.plantronics.com

sv

Sverige
Tel: 0200 21 46 81

tr

Daha fazla bilgi için:
www.plantronics.com



MJ105



Plantronics B.V.
Scorpius 140
2132 LR Hoofddorp
Netherlands
www.plantronics.com

© 2010 Plantronics, Inc. All rights reserved. Plantronics, the logo design, Plantronics Explorer, QuickPair and Sound Innovation are trademarks or registered trademarks of Plantronics, Inc. The Bluetooth name and the Bluetooth trademarks are owned by Bluetooth SIG, Inc., and are used by Plantronics, Inc. under license. All other trademarks are the property of their respective owners.

U.S. Patents Pending
83240-03 Rev A